





## COMPANY BRIEF

### History

In the millennium year of 2000, Ecoon Lighting saw the opportunity of the lights. In the past 16 years, the company has laid its focus on ODM, OEM, and distribution activities for lamp item export.

### Management philosophy

The export lighting area is changing rapidly, and quality can no longer be taken for granted. To guarantee quality, we manufacture LED lighting that does not only comply with international laws and regulations today, but also tomorrow, without any EMC risks and a no-nonsense warranty policy. Partners and users of Ecoon lighting can use the products for many years, without any concerns.

Due to decennials of experience and expertise, Ecoon knows like no other how an additional value can be offered. Optimized production processes and rigorous quality management guarantee quality, as well as a short ROI period due to a good quality to price ratio. A principled, dynamic, and refreshing policy guarantees the quality of our collaboration, for we treat our relations the way we would want to be treated.

We always fulfill our promises, so Ecoon partners will be assured of a portfolio with a great quality-price ratio, certifications, supply chain control, warranty conditions, and project support, in word and deed. Our focus lies on the core values: trust and reliability.

We focus on a win-win relationship on a long-term basis. It is not without reason that we are currently the fastest growing lighting provider in China. Over 80 years of management experience and a close-knit team of professionals guarantee a lasting and profitable collaboration between your business and Ecoon Lighting.

### Mission

Producing energy efficient LED solutions that do not only comply with International laws and regulations today, but also tomorrow, and which offer our Foreigner partners a justifiable competitive advantage, is what forms Ecoon Lighting's core mission.

### Vision

Ecoon Lighting strives to become the supplier of preference for oversea clients.

## EQUIPMENT



## CERTIFICATION





# IP20 LED BATTEN



## Specification

Item No	Voltage	Power	LM	LM/W	CRI	Dimensions
ECO106A	220-240V 50/60Hz	20W	2000LM	100LM/W	≥80	565*80*68mm
ECO112A	220-240V 50/60Hz	40W	4000LM	100LM/W	≥80	1165*80*68mm
ECO115A	220-240V 50/60Hz	60W	6000LM	100LM/W	≥80	1465*80*68mm
ECO118A	220-240V 50/60Hz	80W	8000LM	100LM/W	≥80	1765*80*68mm

Technical data tolerance:±10%

## ·Product Features

- Steel base,PC milky cover
- IP20,IK08
- LM-80 LED SMD inside
- Double LED module inside
- PHILIPS/LIFUD etc driver inside
- Up to 150LM/W
- Serially linkable
- Emergency/dimming/DALI/sensor/CCT select/power select optional
- Suitable for office, school, hospital, shop, restaurant, etc.

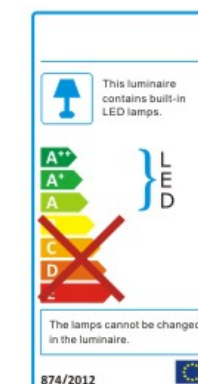
### Performance



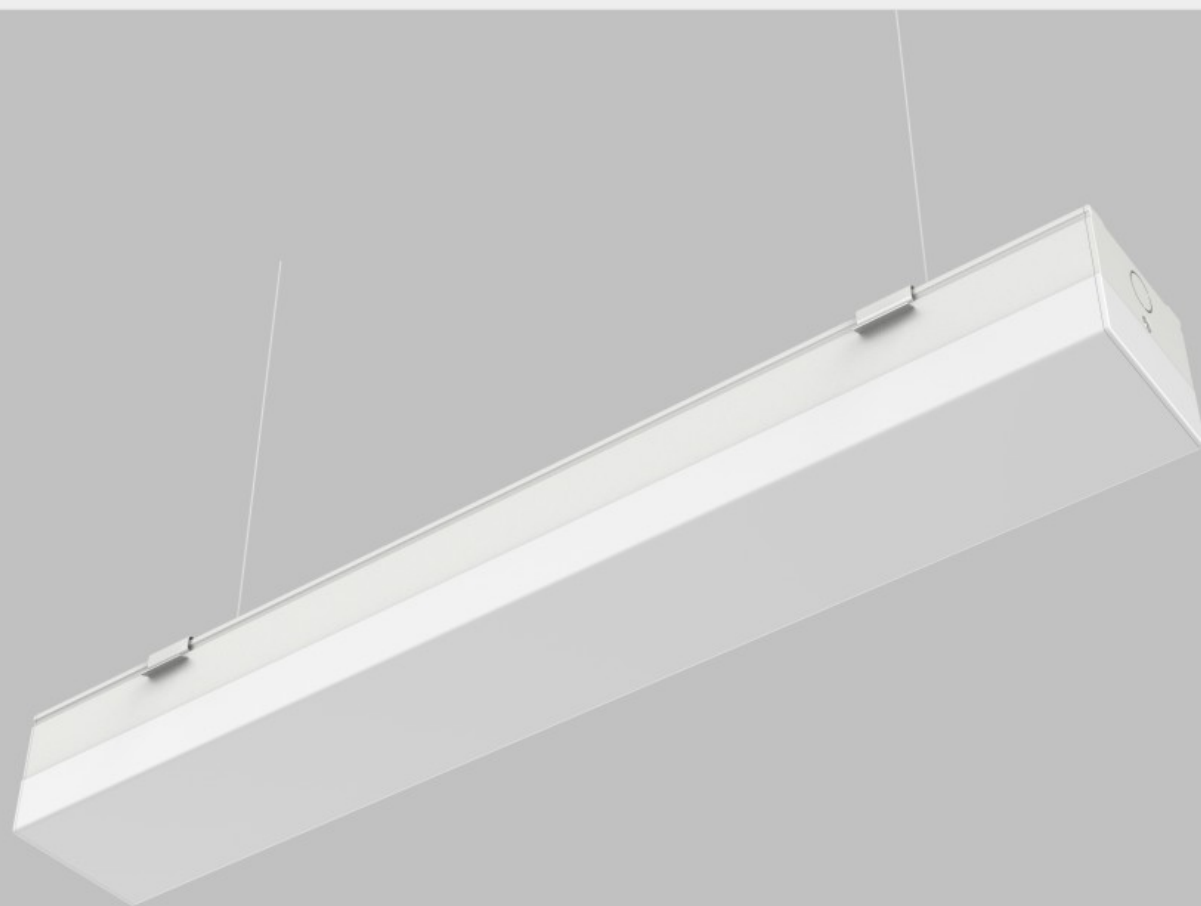
### Certification



### Application



# IP20 LED BATTEN



**ECO-B**

## Specification

Item No	Voltage	Power	LM	LM/W	CRI	Dimensions
ECO106B	220-240V 50/60Hz	20W	2000LM	100LM/W	≥80	565*80*68mm
ECO112B	220-240V 50/60Hz	40W	4000LM	100LM/W	≥80	1165*80*68mm
ECO115B	220-240V 50/60Hz	60W	6000LM	100LM/W	≥80	1465*80*68mm
ECO118B	220-240V 50/60Hz	80W	8000LM	100LM/W	≥80	1765*80*68mm

Technical data tolerance:±10%

## Product Features

- Steel base, PC milky cover
- IP20, IK08
- LM-80 LED SMD inside
- Double LED module inside
- PHILIPS/LIFUD etc driver inside
- Up to 150LM/W
- Serially linkable
- Emergency/dimming/DALI/sensor/CCT select/power select optional
- Suitable for office, school, hospital, shop, restaurant, etc.

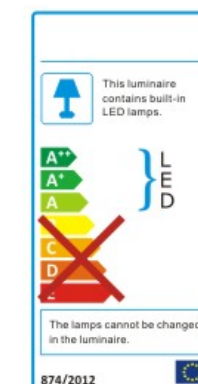
### Performance



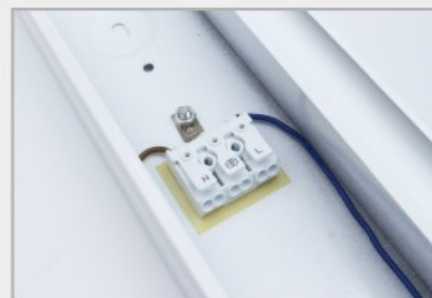
### Certification



### Application



# IP20 LED BATTEN



## Specification

Item No	Voltage	Power	LM	LM/W	CRI	Dimensions
ECO106C	220-240V 50/60Hz	20W	2000LM	100LM/W	≥80	610*64*62mm
ECO112C	220-240V 50/60Hz	40W	4000LM	100LM/W	≥80	1220*64*62mm
ECO115C	220-240V 50/60Hz	60W	6000LM	100LM/W	≥80	1524*64*62mm
ECO118C	220-240V 50/60Hz	80W	8000LM	100LM/W	≥80	1829*64*62mm

Technical data tolerance:±10%

## ·Product Features

- Steel base,PC milky cover
- IP20,IK08
- LM-80 LED SMD inside
- Double LED module inside
- PHILIPS/LIFUD etc driver inside
- Up to 150LM/W
- Serially linkable
- Emergency/dimming/DALI/sensor/CCT select/power select optional
- Suitable for office, school, hospital, shop, restaurant, etc.

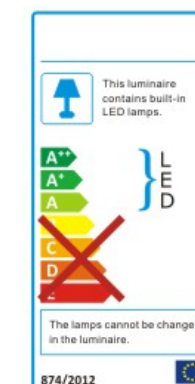
### Performance



### Certification



### Application





# IP20 LED BATTEN



## Specification

Item No	Voltage	Power	LM	LM/W	CRI	Dimensions
ECO106D	220-240V 50/60Hz	20W	2000LM	100LM/W	≥80	630*185*76mm
ECO112D	220-240V 50/60Hz	40W	4000LM	100LM/W	≥80	1250*185*76mm
ECO115D	220-240V 50/60Hz	60W	6000LM	100LM/W	≥80	1550*185*76mm
ECO118D	220-240V 50/60Hz	80W	8000LM	100LM/W	≥80	1850*185*76mm

Technical data tolerance:±10%

## ·Product Features

- Steel base,PC milky cover
- IP20,IK08
- LM-80 LED SMD inside
- Double LED module inside
- PHILIPS/LIFUD etc driver inside
- Up to 150LM/W
- Serially linkable
- Emergency/dimming/DALI/sensor/CCT select/power select optional
- Suitable for office, school, hospital, shop, restaurant, etc.

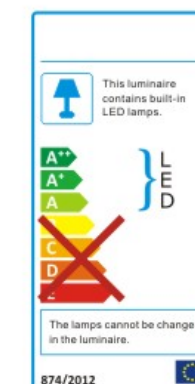
### Performance



### Certification



### Application



# IP65 LED WATERPROOF LIGHT



ECO-E

## Specification

Item No	Voltage	Power	LM	LM/W	CRI	Dimensions
ECO106E	220-240V 50/60Hz	20W	2600LM	130LM/W	≥80	650*63*76mm
ECO112E	220-240V 50/60Hz	40W	5200LM	130LM/W	≥80	1250*63*76mm
ECO115E	220-240V 50/60Hz	60W	7150LM	130LM/W	≥80	1550*63*76mm
ECO118E	220-240V 50/60Hz	80W	10400LM	130LM/W	≥80	1850*63*76mm

Technical data tolerance:±10%

## Product Features

- PC material with aluminum reflector inside
- Extrusion design better waterproof effect
- Quick connector save 30% labor cost
- LM-80 LED SMD inside
- PHILIPS/LIFUD etc driver inside
- UP to 150lm/w
- Serially linkable
- Emergency/dimming/DALI/ sensor/CCT select
- Suitable for underground parking, hospital, factory, warehouse, corridor etc.

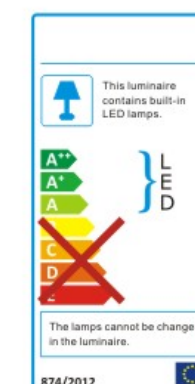
### Performance



### Certification



### Application



# IP66/IP69K LED WATERPROOF LIGHT

ECO-F

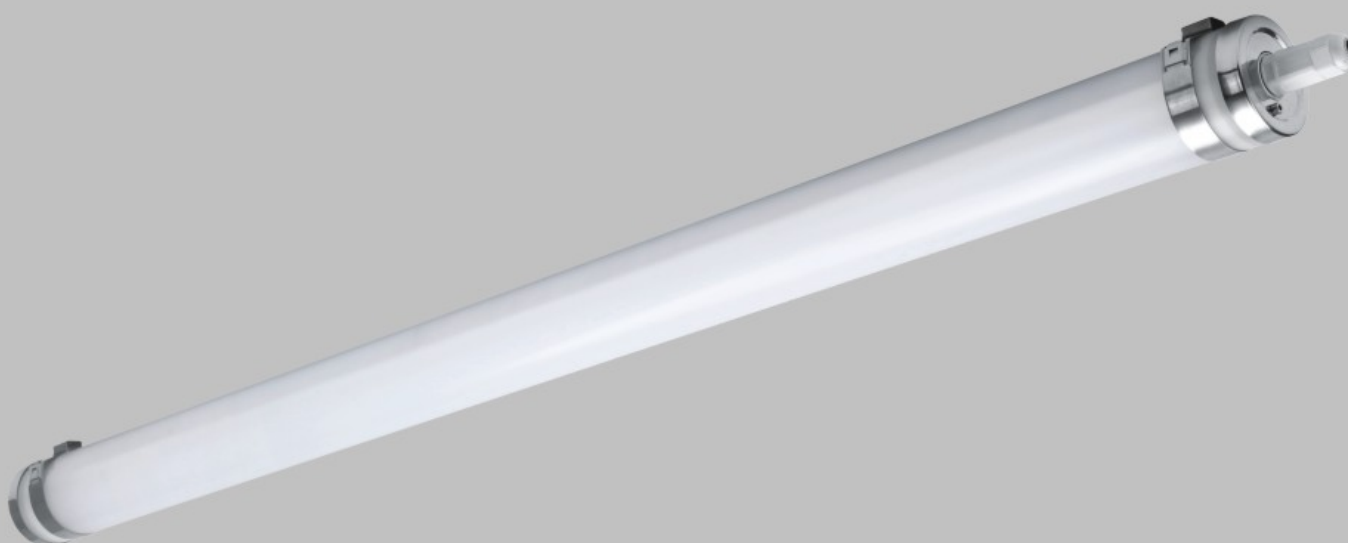
## Specification

Item No	Voltage	Power	LM	LM/W	CRI	Dimensions
ECO106F	220-240V 50/60Hz	20W	2600LM	130LM/W	≥80	600*φ75mm
ECO112F	220-240V 50/60Hz	40W	5200LM	130LM/W	≥80	1200*φ75mm
ECO115F	220-240V 50/60Hz	60W	7150LM	130LM/W	≥80	1500*φ75mm

Technical data tolerance:±10%

## Product Features

- PMMA OR PC material with aluminum reflector inside
- Stainless steel end caps, high quality
- Quick connector save 30% labor cost
- LM-80 LED SMD inside
- PHILIPS/LIFUD etc driver inside
- UP to 150lm/w
- Serially linkable
- Emergency/dimming/DALI/ sensor/CCT select
- Suitable for underground parking, hospital, factory, warehouse, corridor etc.



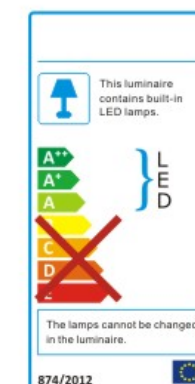
### Performance



### Certification



### Application





# IP65 LED WATERPROOF LIGHT



## Specification

Item No	Voltage	Power	LM	LM/W	CRI	Dimensions
ECO106G	220-240V 50/60Hz	18W	1800LM	100LM/W	≥80	600*55*32mm
ECO112G	220-240V 50/60Hz	36W	3600LM	100LM/W	≥80	1200*55*32mm
ECO115G	220-240V 50/60Hz	45W	4500LM	100LM/W	≥80	1500*55*32mm

Technical data tolerance:±10%

## ·Product Features

- PC material,non-corrosive
- Extrusion design better waterproof effect
- Quick connector save 30% labor cost
- LM-80 LED SMD inside
- non-isolated driver inside
- UP to 150lm/w
- economy version
- Suitable for underground parking, hospital, factory, warehouse, corridor etc.

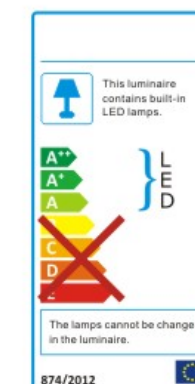
### Performance



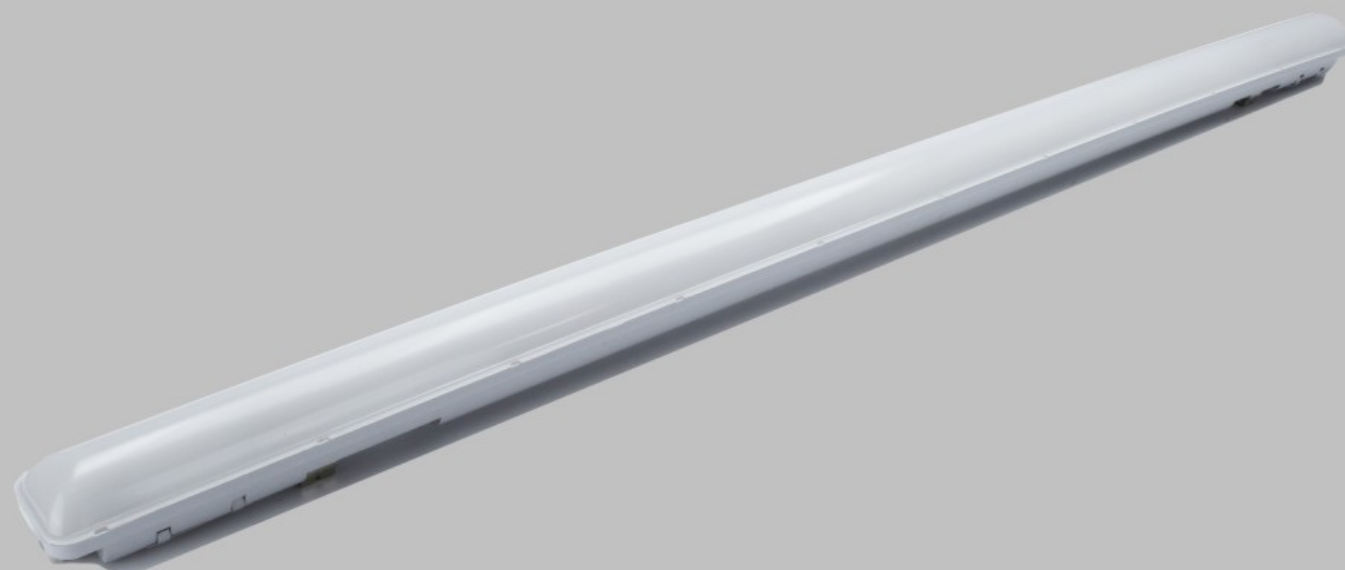
### Certification



### Application



# IP65 LED WATERPROOF LIGHT



## Specification

Item No	Voltage	Power	LM	LM/W	CRI	Dimensions
ECO106H	220-240V 50/60Hz	20W	2000LM	100LM/W	≥80	550*70*72mm
ECO112H	220-240V 50/60Hz	40W	4000LM	100LM/W	≥80	1200*70*72mm
ECO115H	220-240V 50/60Hz	60W	6000LM	100LM/W	≥80	1450*70*72mm

Technical data tolerance:±10%

## ·Product Features

- ABS base&PC cover or PC base&PC cover
- Steel or aluminum reflector inside
- Clips free design
- Quick connector save 30% labor cost
- LM-80 LED SMD inside
- PHILIPS/LIFUD etc driver inside
- UP to 150lm/w
- Serially linkable
- Emergency/dimming/DALI/ sensor/CCT select
- Suitable for underground parking, hospital, factory, warehouse, corridor etc.

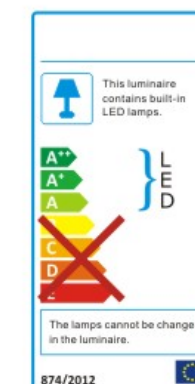
### Performance



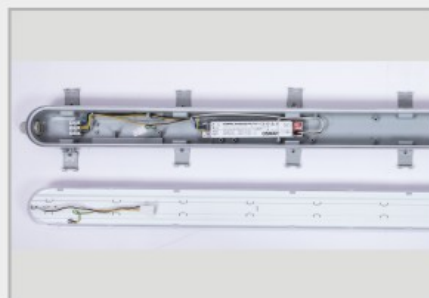
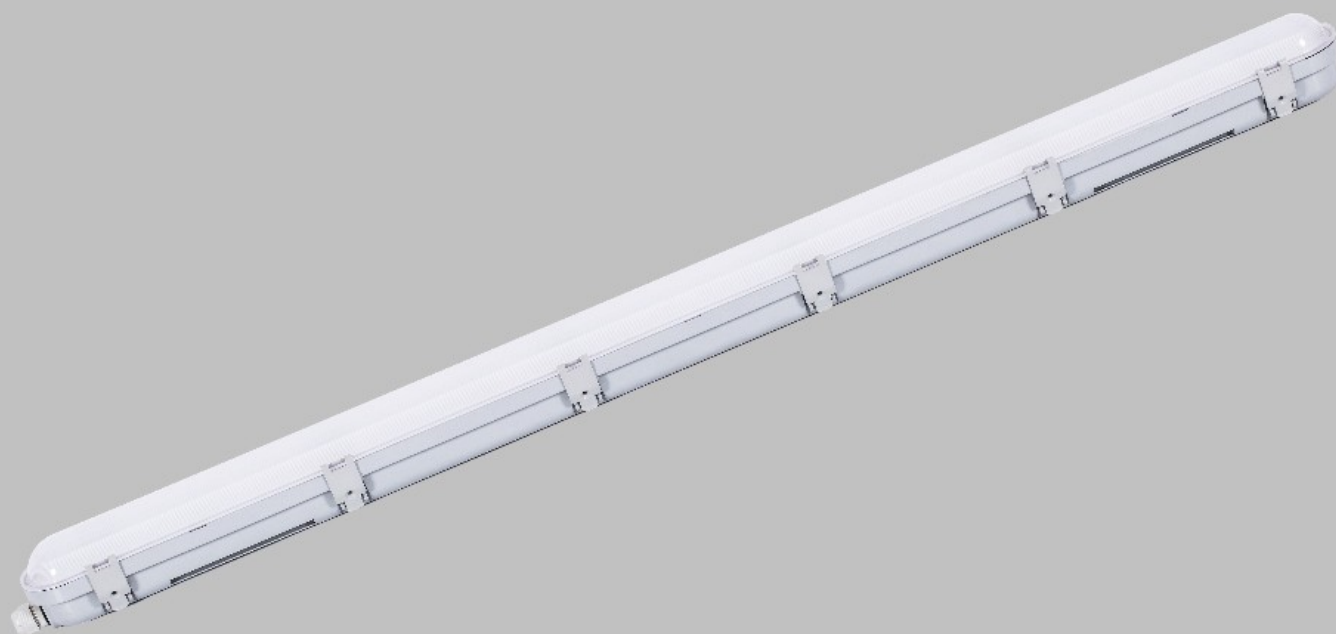
### Certification



### Application



# IP65 LED WATERPROOF LIGHT



## Specification

Item No	Voltage	Power	LM	LM/W	CRI	Dimensions
ECO106I	220-240V 50/60Hz	20W	2600LM	130LM/W	≥80	605*95*81mm
ECO112I	220-240V 50/60Hz	40W	5200LM	130LM/W	≥80	1205*95*81mm
ECO115I	220-240V 50/60Hz	60W	7800LM	130LM/W	≥80	1505*95*81mm

Technical data tolerance:±10%

## ·Product Features

- PC material with aluminum reflector inside
- Reflector combine with cover together
- Quick connector save 50% labor cost
- LM-80 LED SMD inside
- PHILIPS/LIFUD etc driver inside
- UP to 150lm/w
- Serially linkable
- Emergency/dimming/DALI/ sensor/CCT select
- Suitable for underground parking, hospital, factory, warehouse, corridor etc.

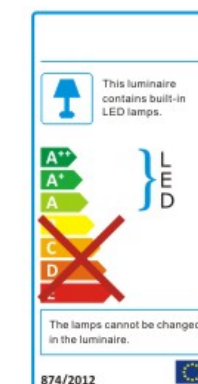
### Performance



### Certification



### Application





# IP65 LED WATERPROOF LIGHT



## Specification

Item No	Voltage	Power	LM	LM/W	CRI	Dimensions
ECO118J	220-240V 50/60Hz	1x10W	1000LM	100LM/W	≥80	670*105*107mm
ECO136J	220-240V 50/60Hz	1x20W	2000LM	100LM/W	≥80	1270*105*107mm
ECO158J	220-240V 50/60Hz	1x30W	3050LM	100LM/W	≥80	1570*105*107mm
ECO218J	220-240V 50/60Hz	2x10W	2000LM	100LM/W	≥80	670*165*107mm
ECO236J	220-240V 50/60Hz	2x20W	4000LM	100LM/W	≥80	1270*165*107mm
ECO258J	220-240V 50/60Hz	2x30W	6000LM	100LM/W	≥80	1570*165*107mm

Technical data tolerance:±10%

## ·Product Features

- ABS base&PC cover or PC base&PC cover
- Steel or aluminum reflector inside
- S/S or Plastic clips design
- Quick connector save 30% labor cost
- LED T8 tube
- Super large and wide body size
- Serially linkable
- Suitable for underground parking, hospital, factory, warehouse, corridor etc.

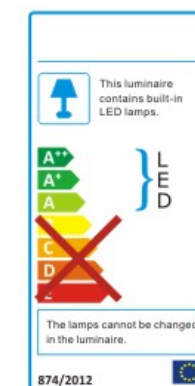
### Performance



### Certification



### Application



# IP65 LED WATERPROOF LIGHT



## Specification

Item No	Voltage	Power	LM	LM/W	CRI	Dimensions
ECO118K	220-240V 50/60Hz	10W	1000LM	100LM/W	≥80	660*70*61mm
ECO136K	220-240V 50/60Hz	20W	2000LM	100LM/W	≥80	1260*70*61mm
ECO158K	220-240V 50/60Hz	30W	3000LM	100LM/W	≥80	1560*70*61mm
ECO218K	220-240V 50/60Hz	20W	2000LM	100LM/W	≥80	660*107*61mm
ECO236K	220-240V 50/60Hz	40W	4000LM	100LM/W	≥80	1260*107*61mm
ECO258K	220-240V 50/60Hz	60W	6000LM	100LM/W	≥80	1560*107*61mm

## Product Features

Technical data tolerance:±10%

- PC/ABS material with aluminum reflector inside
- S/S or plastic clips
- Quick connector save 50% labor cost
- LM-80 LED SMD inside
- PHILIPS/LIFUD etc driver inside
- UP to 150lm/w
- Serially linkable
- Emergency/dimming/DALI/ sensor/CCT select
- Suitable for underground parking, hospital, factory, warehouse, corridor etc.

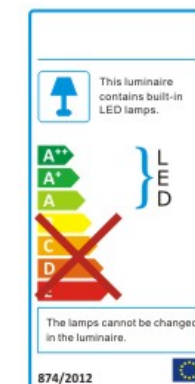
### Performance



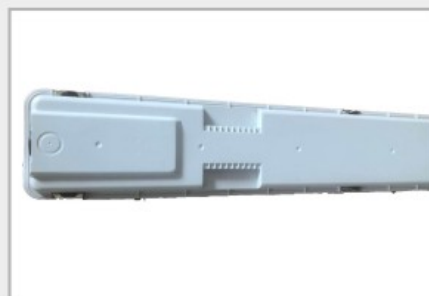
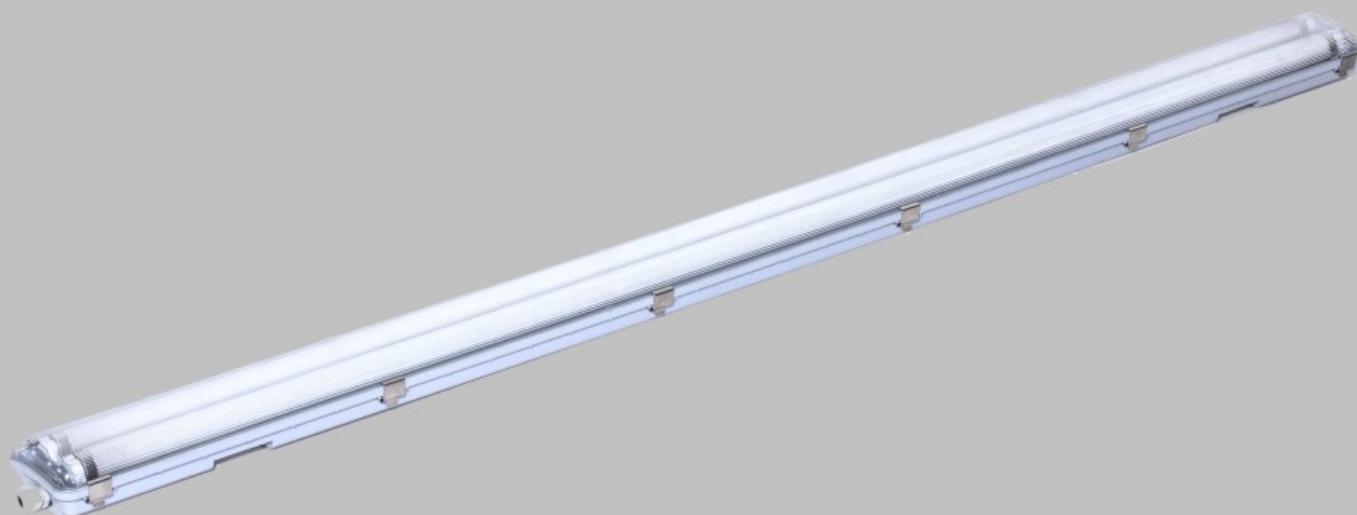
### Certification



### Application



# IP65 LED WATERPROOF LIGHT



## Specification

Item No	Voltage	Power	LM	LM/W	CRI	Dimensions
ECO118L	220-240V 50/60Hz	1x10W	1000LM	100LM/W	≥80	655*62*56mm
ECO136L	220-240V 50/60Hz	1x20W	2000LM	100LM/W	≥80	1265*62*56mm
ECO158L	220-240V 50/60Hz	1x30W	3050LM	100LM/W	≥80	1565*62*56mm
ECO218L	220-240V 50/60Hz	2x10W	2000LM	100LM/W	≥80	655*100*56mm
ECO236L	220-240V 50/60Hz	2x20W	4000LM	100LM/W	≥80	1265*100*56mm
ECO258L	220-240V 50/60Hz	2x30W	6000LM	100LM/W	≥80	1565*100*56mm

Technical data tolerance:±10%

## ·Product Features

- ABS base&PC cover or PC base&PC cover
- Steel or aluminum reflector inside
- S/S clips design
- Quick connector save 30% labor cost
- LED T8 tube
- Super large and wide body size
- Serially linkable
- Suitable for underground parking, hospital, factory, warehouse, corridor etc.

### Performance



### Certification



### Application

